

# KOREA JACKETS SILHOUETTES





## BOXY JACKET

Durable twills and denims remain essential materials with their natural ability to add structure to typically utility driven silhouettes, and will hold weight for both youth-driven and casual styles. Flat compact cottons usher in a modern overhaul, with clean lines and engineered details adding fashion appeal. Simple zip closures are practical while utility snap fastenings inform more authentic options.





## COMMUTER COAT

A practical, weather-appropriate layering piece transcends both casual and formal markets

Lightweight technical nylons and papery synthetics base remain essential for boxier fits that reference perennial mac styles with hybrid sports-tailored looks.

Coated and compact cottons in the season's neutrals maintain a clean-cut, understated style that will hold weight commercially in unlined silhouettes.





## LINING-STYLE JACKET

This style is versatile so has broad casual appeal. This piece appears as if buttoned out from beneath a parka. Khaki and navy are key colours, as are workwear shades of mustard and neutral oyster tones. Cotton or natural-looking fabrics are key.





## PARACHUTE ANORAK

Lightweights, billowing nylons, ripstop and durable blends are top choices; sheerplay, high shine add interest. Flyaway shapes have a utilitarian edge. Fit and flare drawstrings, clip locks and rubberized trims bring sporty vibes.





PARACHUTE ANORAK

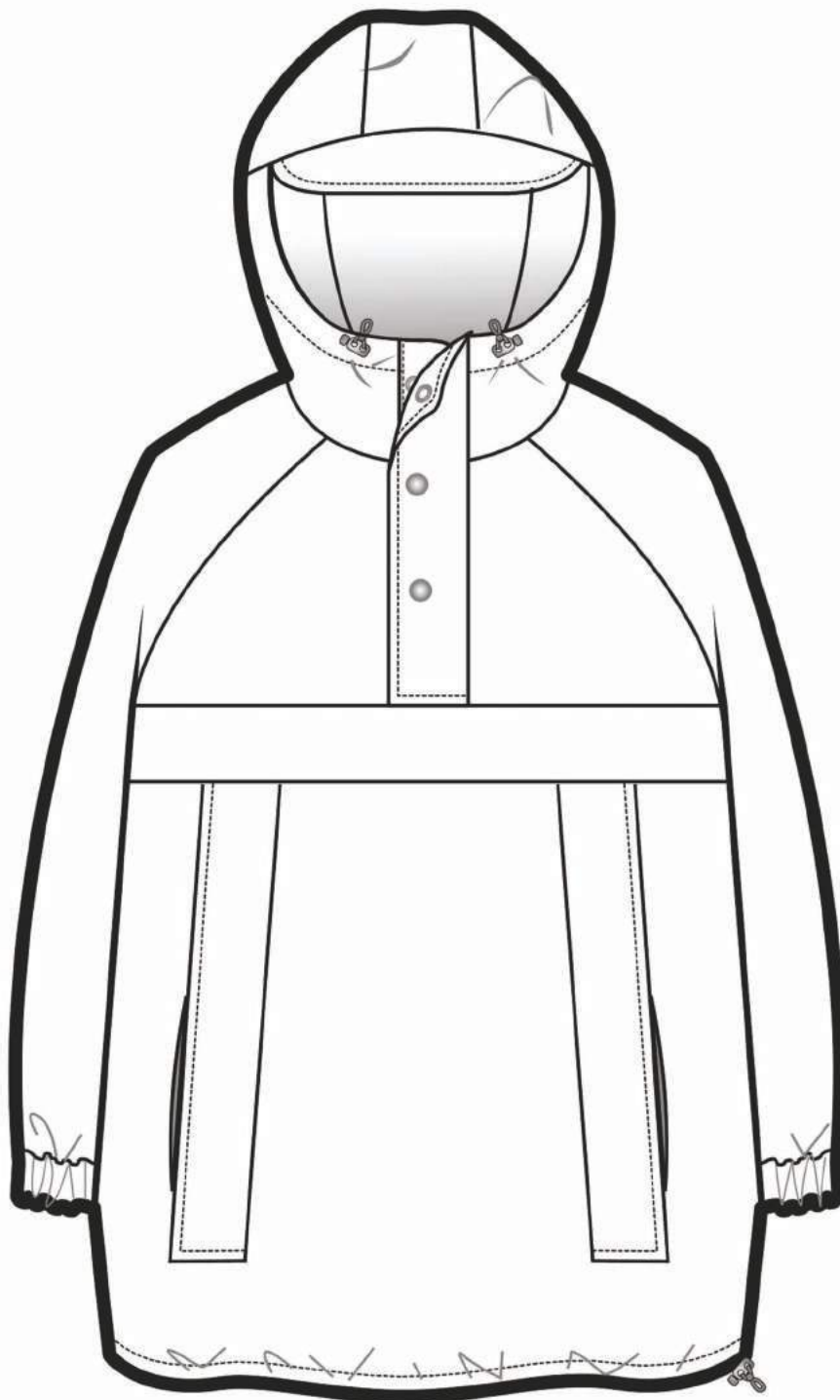




## UTILITY CAGOULE

Over-the-head styles play into evolving youth-driven 1990s rave and street looks with sporty colour-blocked panels and kangaroo patch pockets.

Elasticated toggles and trims, and heat-sealed zips become essential design details as this versatile style drives the wider integration of tech and fashion items into the mainstream.





# UTILITY CAGOULE

