

SS18 WOMEN'S KNIT TREND





Athleisure has become a big topic over the years and 'Mesh' a big topic in sports wear.

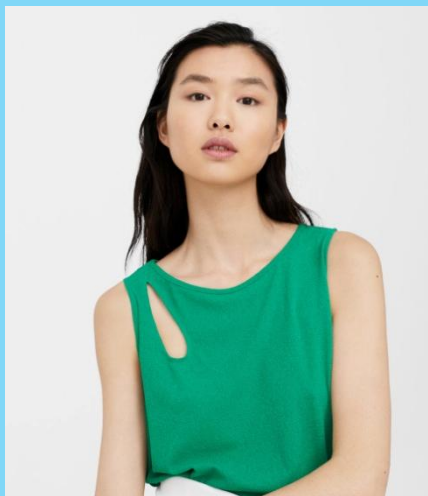
Mesh techniques can be translated into flatknit and jersey items to create a softer hand feel.

STYLE

KNIT MESH

TMS

The TMS Group



Body conscious is inspired by sporty silhouettes. Fitted tops that are layered, cut-out, synthetic mixes & cotton touch fabrics, fine gauge knits & lustrous ribs give a minimalist yet luxurious look.

STYLE

BODY-CONSCIOUS

TMS

The TMS Group



Simplicity is key: sheer knits in pastels or refined metallics, skinny crew neck & turtlenecks in fine gauge ribs, bold multicolour stripes and elongated sleeves create a playful, nostalgic mood.



STYLE

SECOND SKIN



Fine lines and fresh monotone is important is a key look for Summer.

Simple silhouettes in V-neck and Round Neck are updated with flared or bell sleeves.



STYLE

FLARED SLEEVE

TMS

The TMS Group



DETAILS
DRAPING

TMS

The TMS Group



DETAILS FLOWER

TMS

The TMS Group



DETAILS

KNOT & TWIST



DETAILS
LACE-UP